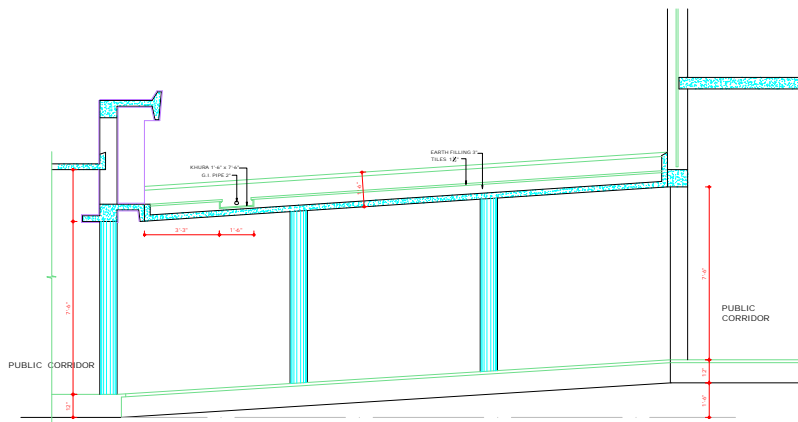
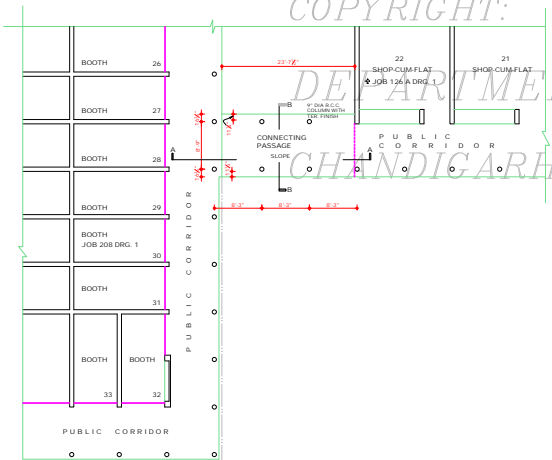


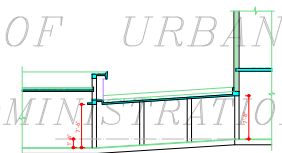
FRONT ELEVATION



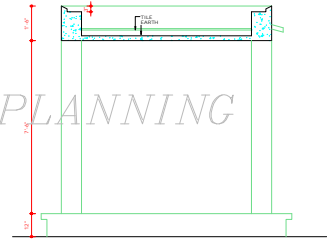
SECTION AA' (1/2" DETAIL)



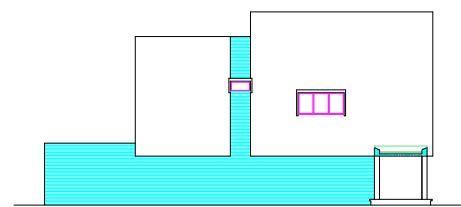
PLAN



SECTION A A'



SECTION B B' (1/2" DETAIL)



SECTIONAL ELEVATION B B'

**DISCLAIMER**  
 THOUGH EVERY CARE HAS BEEN TAKEN TO PROVIDE THE CORRECT VERSION OF THE ARCHITECTURAL CONTROL ON THIS DIGITIZED PDF FORMAT, YET IN CASE OF ANY DISCREPANCY, THE MASTER COPY OF THE ARCHITECTURAL CONTROL AVAILABLE ON EACH SUCH SITE, AS AVAILABLE IN THE COMMERCIAL RECORD OF THE OFFICE OF CHIEF ARCHITECT OR HERETO FORFEITATION WILL OVERRULE THE DIGITIZED FORMAT.

CHANDIGARH PROJECT	
NOTES	
1.	THIS DRG. IS THE PROPERTY OF THE DEPTT. OF ARCHITECTURE CHANDIGARH U.T. AND FORMERLY OF THE GOVT. OF PUNJAB AND MUST NOT BE ALTERED, COPIED OR USED IN WHOLE OR IN PART WITHOUT THE PERMISSION OF THIS DEPTT. IN WRITING.
2.	THIS DRG. IS ACTUALLY TRACED FROM DRG. No. 2 OF JOB No. 208 ON DATED 18.10.72 Sd/- 18/11/72
NOTE: THIS DRAWING HAS BEEN COMPUTERISED ON 20.08.09 FROM DRG. No. 2 JOB No. 208	
S.No.	DESCRIPTION DATE/DESIGN
REVISIONS	
Sd/- P. JEANNERET 15.8.60 CHIEF ARCHITECT	SENIOR ARCHITECT
Sd/- ADITYA PARKASH 4.8.60 ARCHITECT	ASSTT. ARCHITECT
OFFICE OF THE CHIEF ARCHITECT CHANDIGARH. U.T.	
SCALE : 8 FEET TO AN INCH	DATE: 23.9.60
DRAWN SADHU SINGH	DRG. No. 2
Sd/- Nov. 1972	JOB No. 208
CONNECTING PASSAGE BETWEEN SHOP-CUM FLAT No. 22 AND BOOTH No. 28 IN SECTOR- 20-A	
ATTESTED TRUE COPY Sd/- KULDEEP ASSTT. ARCHITECT	