

DEPARTMENT OF ARCHITECTURE U.T.

S.No. NOTES

1. THIS DRG. IS THE PROPERTY OF DEPTT. OF ARCHITECTURE U.T. CHANDIGARH, FORMERLY OF THE P.S. GOVT. AND MUST NOT BE ALTERED, COPIED OR USED IN WHOLE OR IN PART WITHOUT THE PERMISSION OF THIS DEPTT. IN WRITING.
2. THIS DRG. HAS BEEN TRACED FROM THE ORIGINAL DRG. No. AC/16-SOB No. 135.

NOTE:- THIS DRAWING HAS BEEN COMPUTERISED ON 15-10-19 FROM DRG. No. AC/16 JOB No. 135

S.No. DESCRIPTION DATE SIGN

REVISIONS

Sd/- S.L. VARMA
24-9-70
CHIEF ADMINISTRATOR

Sd/- P. JEANERETTE
5-11-63
CHIEF ARCHITECT SENIOR ARCHITECT

Sd/- S.D. SHARMA
5-11-63
ARCHITECT ASSTT. ARCHITECT

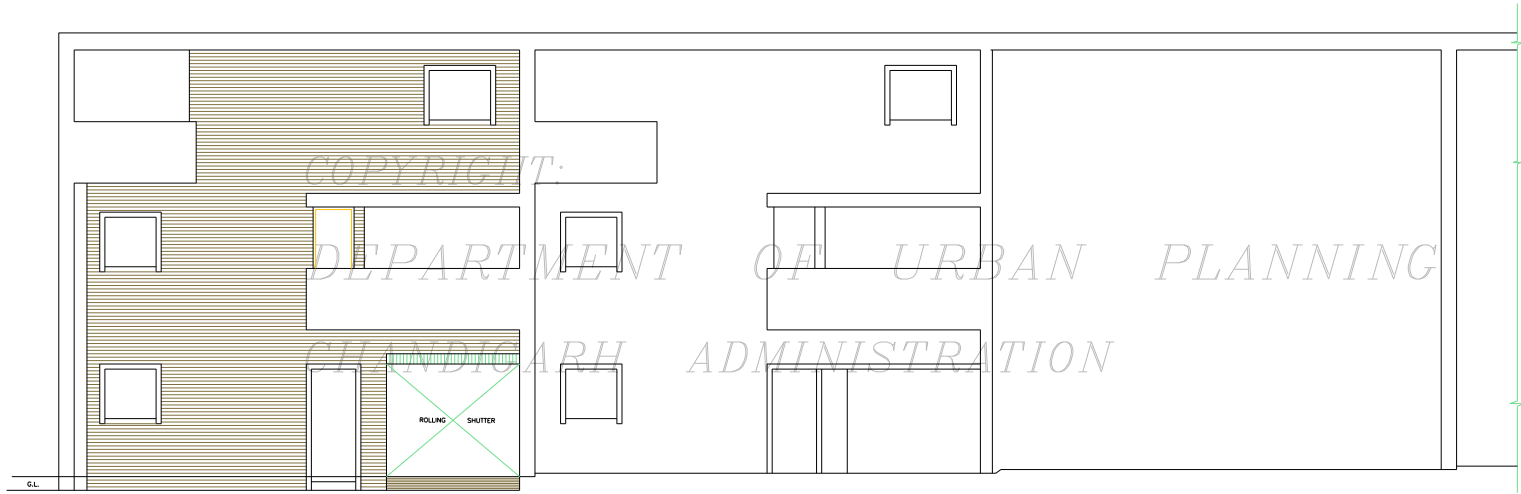
OFFICE OF THE CHIEF ARCHITECT CHANDIGARH.

SCALE:- 1/4 INCH TO A FOOT DATE

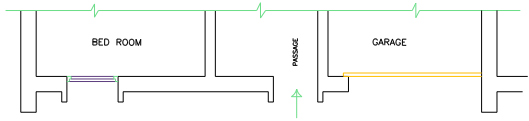
CHECKED	DRG. No.	JOB No.
REDRAWN	AC/16	135
NIRMAL ARORA		

ARCHITECTURAL CONTROL SHEET SUB-SECTOR 15-C

PROPOSED ROLLING SHUTTER (OPTIONAL)



FRONT ELEVATION



P L A N

COPYRIGHT:
DEPARTMENT OF URBAN PLANNING
CHANDIGARH ADMINISTRATION

ATTESTED
Sd/- W.U. KUREKAR
ASSTT. ARCHITECT
DISCLAIMER
THROUGH EVERY CARE HAS BEEN TAKEN TO PROVIDE THE CORRECT VERSION OF THE ARCHITECTURAL CONTROL ON THIS DIGITIZED (PDF) FORMAT. YET IN CASE OF ANY DISCREPANCY, THE MASTER COPY OF THE ARCHITECTURAL CONTROL APPLICABLE ON EACH SUCH SITE, AS AVAILABLE IN THE COMPUTER RECORD COVER OF THE ARCHITECT OR THE ARCHITECT'S OFFICE WILL OVERRIDE THE DIGITIZED FORMAT.